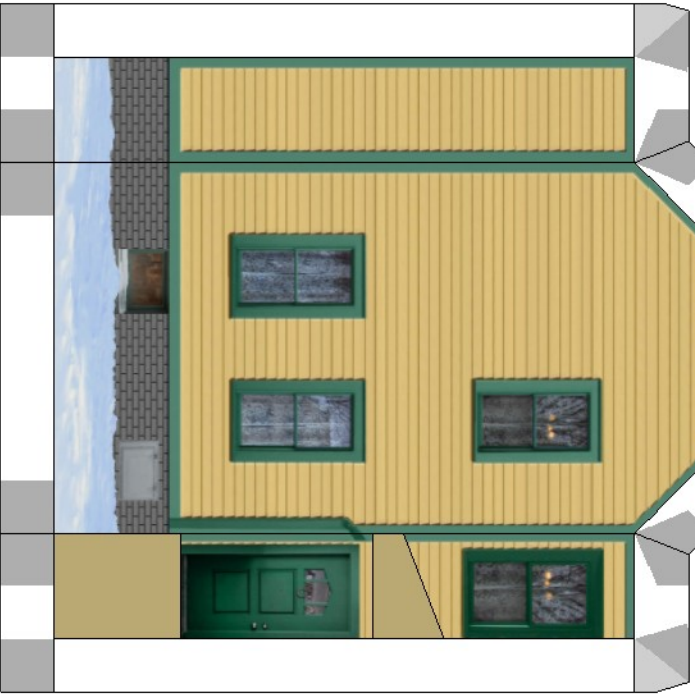
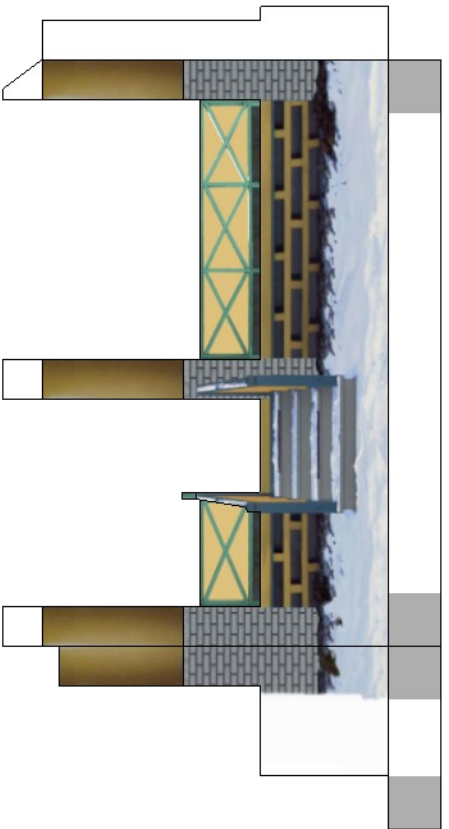


1 inch Seal

for
HO
1:87
Scale

SS42.COM

Download this free paper
model from ss42.com



Download this free paper model from ss42.com

©2011 SS42.COM

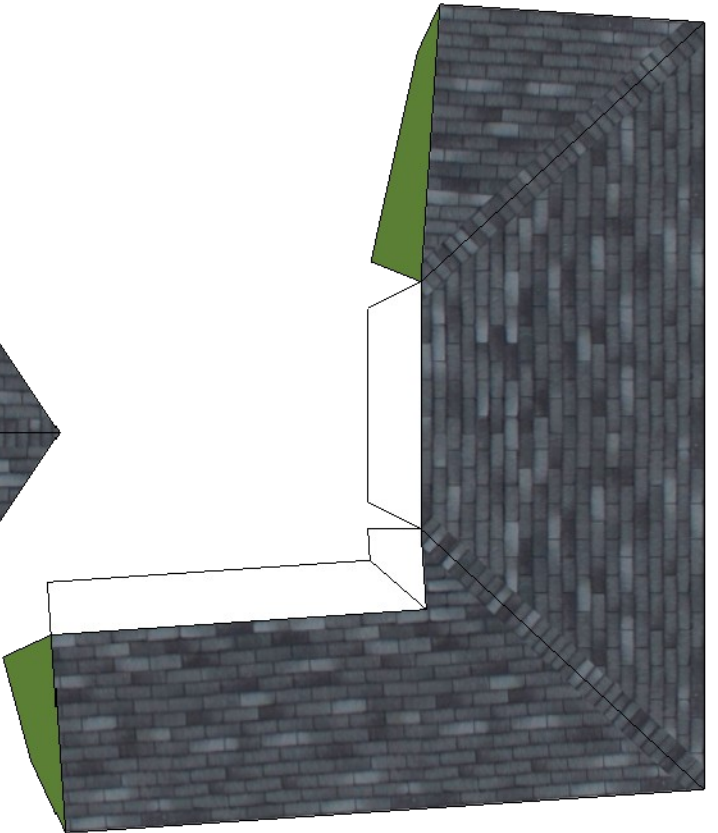
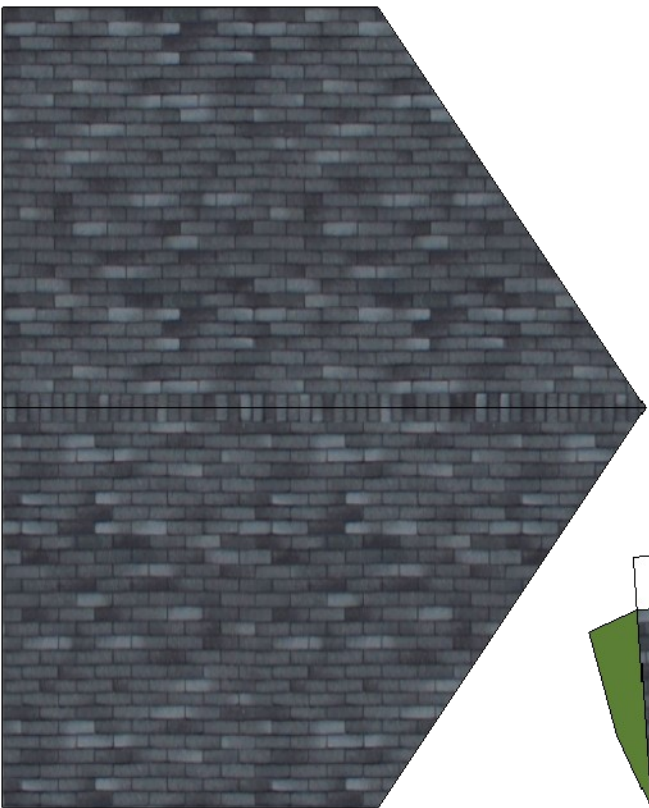
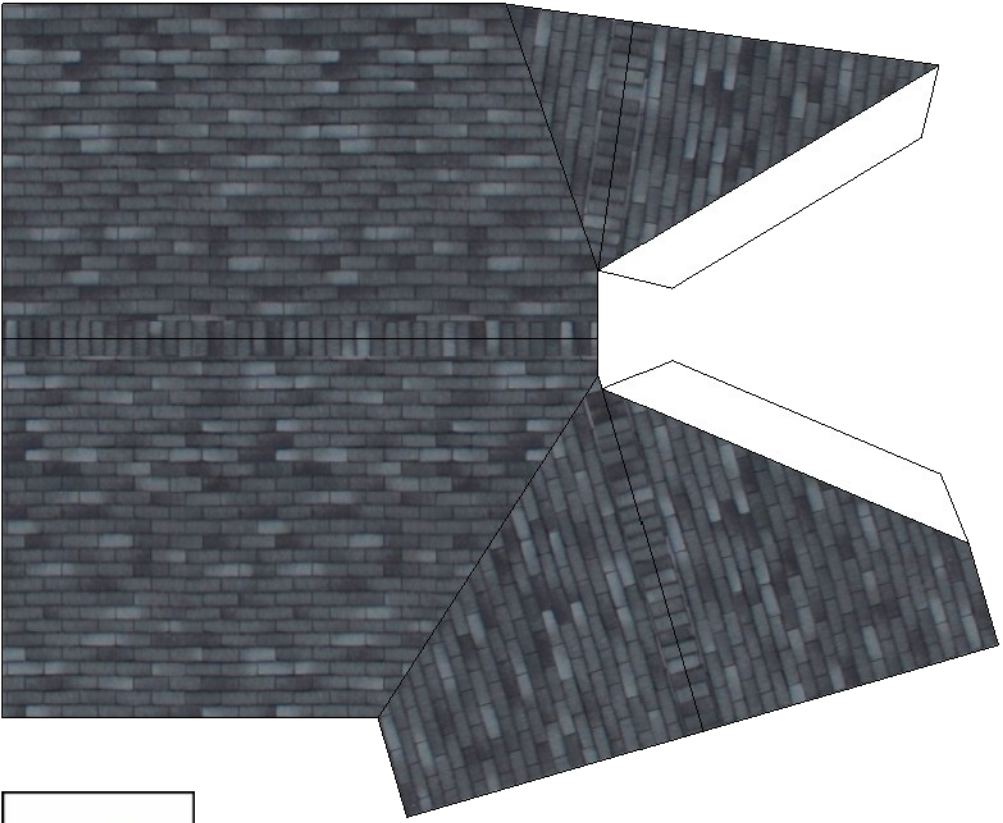


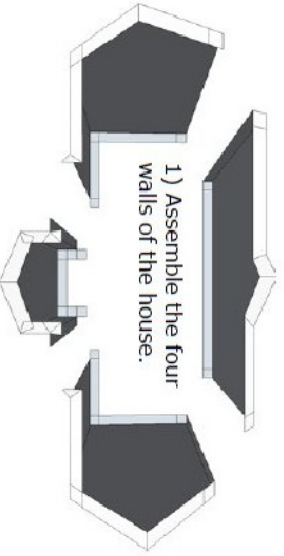
Cut Out



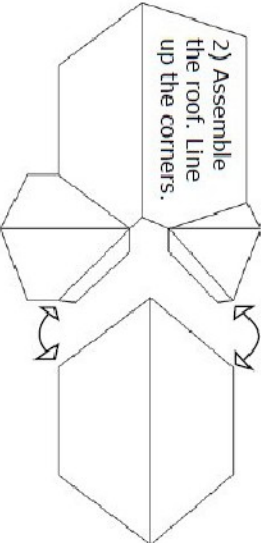
Cut Out

1 inch Seal
for
HO
1:87
Scale
Brought to you by
the staff of
SS42.COM

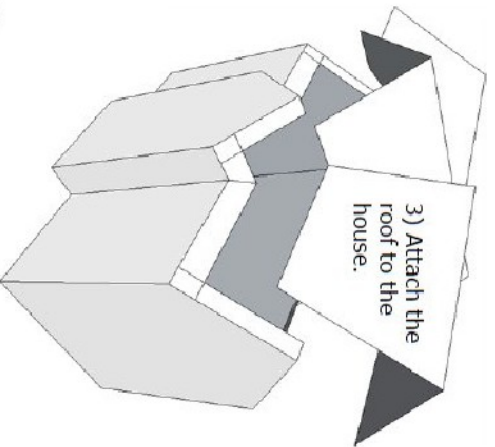




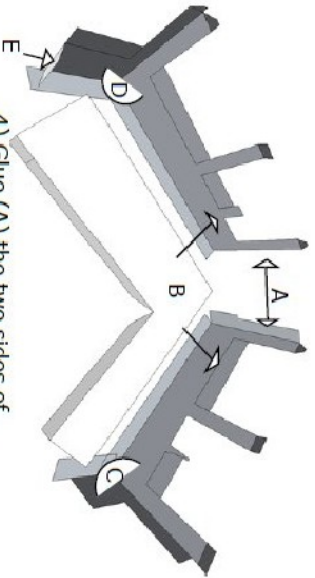
1) Assemble the four walls of the house.



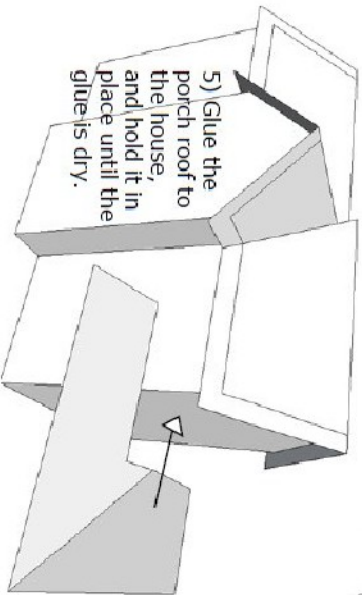
2) Assemble the roof. Line up the corners.



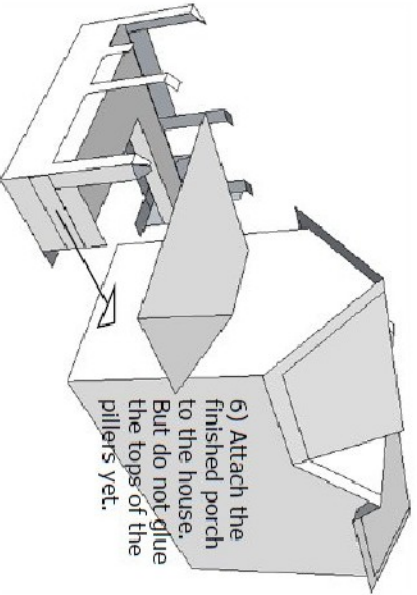
3) Attach the roof to the house.



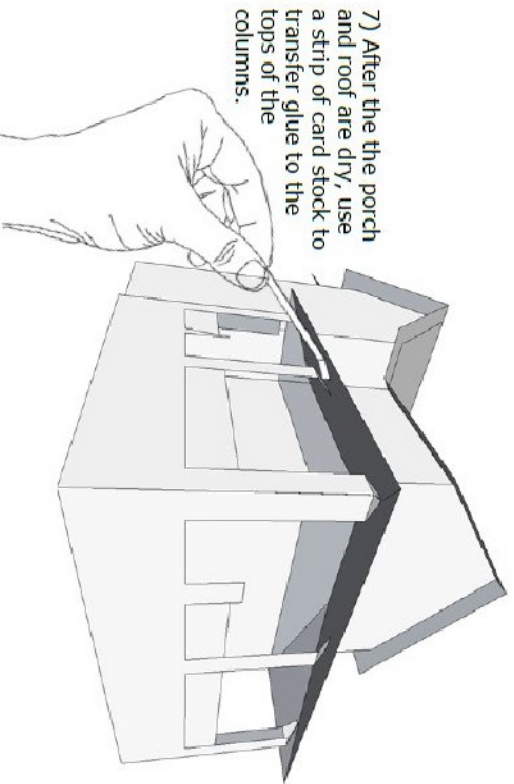
4) Glue (A) the two sides of the porch together first. Glue the deck (B) to the sides of the porch. Wrap around and glue C, D, & E last.



5) Glue the porch roof to the house, and hold it in place until the glue is dry.



6) Attach the finished porch to the house. But do not glue the tops of the pillars yet.



7) After the the porch and roof are dry, use a strip of card stock to transfer glue to the tops of the columns.